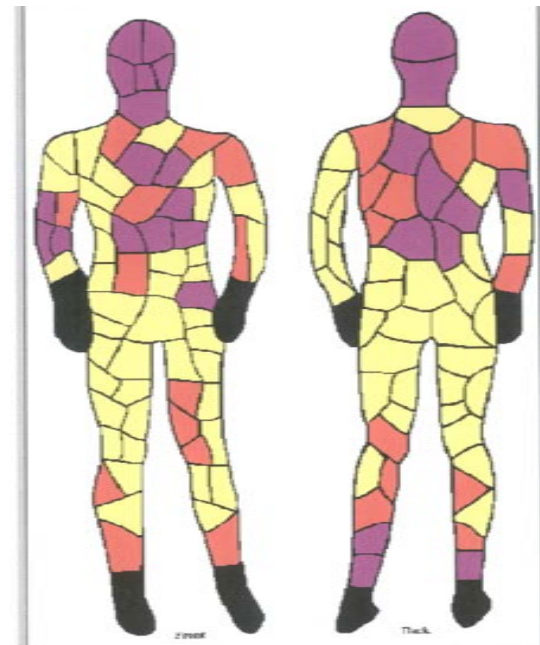


Invalid Sensor	Black
No Burn	Yellow
2nd Degree Burn	Red
3rd Degree Burn	Purple

Layer 1: Cotton T-shirt & Briefs
Layer 2: FR ACU Jacket & Trouser
Layer 3: GORE® PYRAD® Hard Shell
 Jacket & Trouser (Left), Gen 3
 ECWCS L6 Jacket & Trouser (Right)



GORE® PYRAD® Hard Shell

Gen 3 ECWCS L6

Excluding head sensors	
% 2nd degree predicted body burn	15.574
% 3rd degree predicted body burn	0.87
Total % predicted body burn	16.444

Excluding head sensors	
% 2nd degree predicted body burn	20.49
% 3rd degree predicted body burn	15.63
Total % predicted body burn	36.12